



01610

2021 5

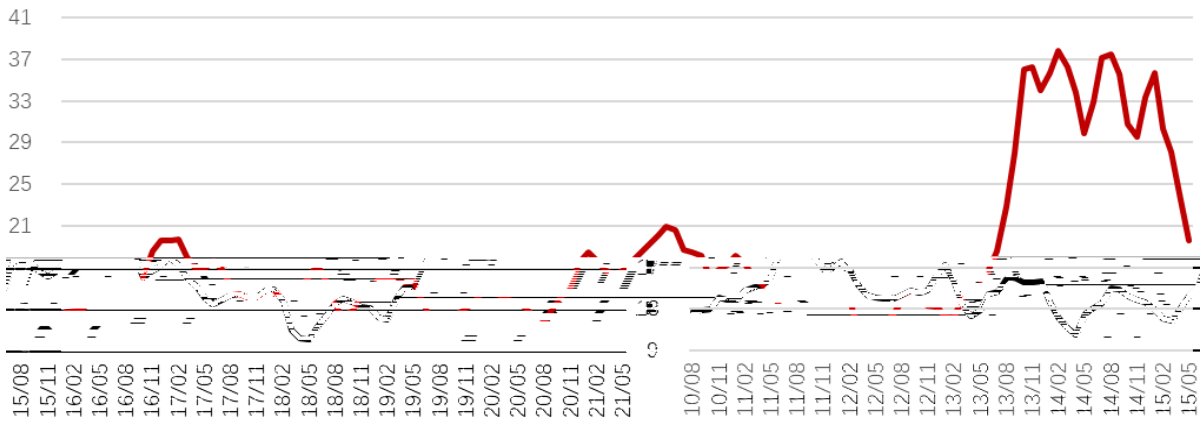
2021 5 31

2021 5

					(%) ¹
2021 1	322	322	32.98	11.8	35.6%
2021 2	202	524	27.33	7.7	37.0%
2021 3	278	802	26.93	10.0	33.1%
2021 4	319	1,121	23.74	10.5	33.1%
2021 5	284	1,405	19.48	11.4	35.1%

¹

wi nd 22



wi nd

2021 6 8